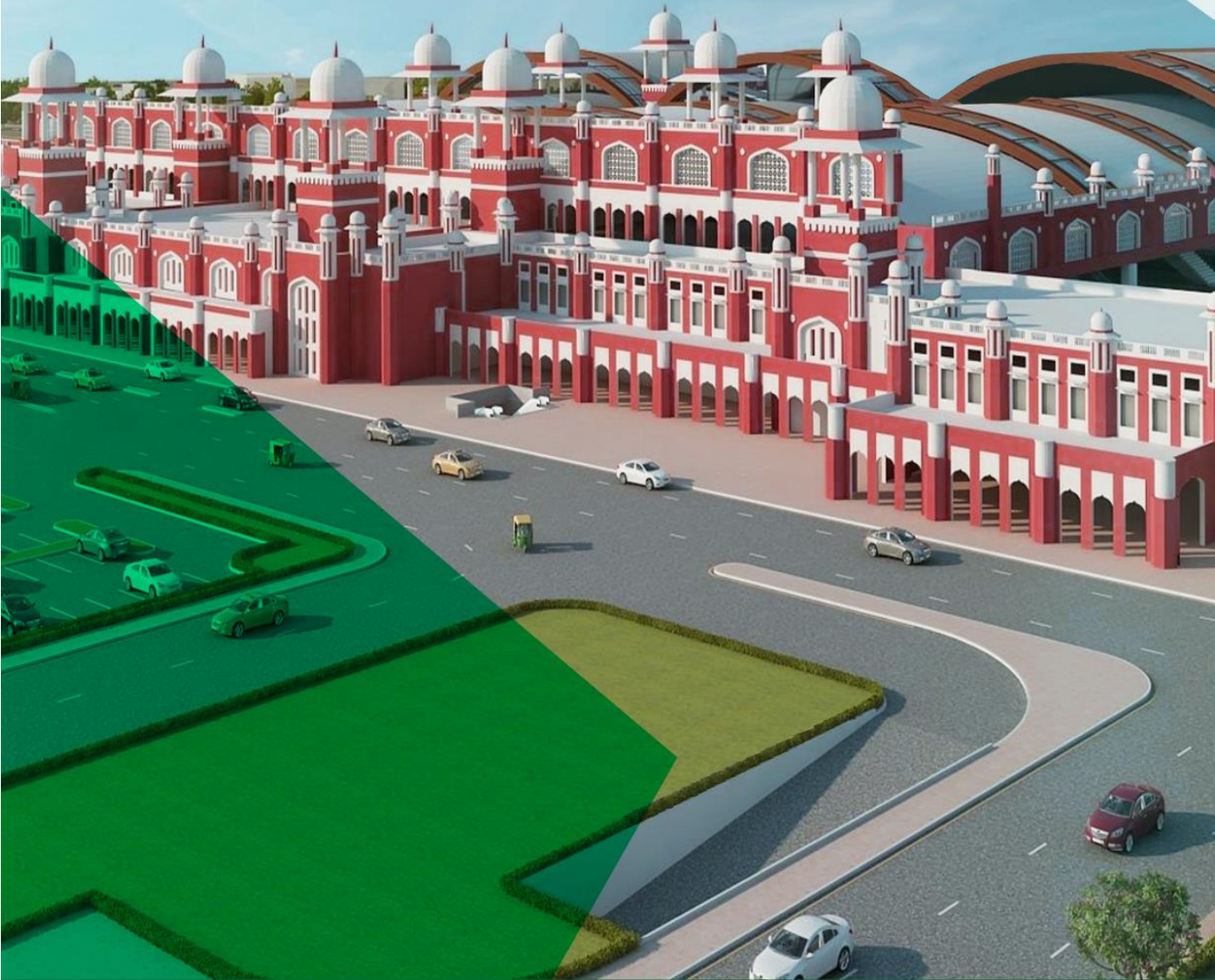


# RAIL LAND DEVELOPMENT AUTHORITY



Q2-July, 2021

A Statutory Authority under Ministry of  
Railways, Government of India

# MESSAGE FROM VC



**Sh. Ved Parkash Dudeja**  
Vice Chairman, RLDA

Dear RLDA Family,

Hope and wish you and your families are keeping safe.

The pandemic engulfed the nation once again in April, leading to the re-imposition of restrictions. But it is heartening to see the decline in average daily cases and the acceleration of the vaccination drive that will eventually pave the way for normalcy. I urge all of you to get vaccinated and continue adhering to necessary precautions and social distancing norms.

The advent of the New Financial Year in April has instilled new hopes and aspirations for us at RLDA. At the outset, I would like to express my heartfelt gratitude towards all of you for your enormous support and contribution to the organisation during the last fiscal. No doubt, the past year was replete with challenges, but we successfully moved ahead without compromising on the precautionary measures.

We have set ambitious goals for this financial year with an aim to contribute to the infrastructural development and augment India's development story. We are confident in achieving these goals through meticulous planning and teamwork. Despite the lockdown restrictions due to the second wave of coronavirus, we have achieved significant progress during the last three months. We have shortlisted nine eligible bidders for our ambitious project on the redevelopment of the New Delhi Railway Station. These applicants will be invited to participate in the bidding process expected to be completed by the end of the year. I am delighted to share that the Gomtinagar Railway Station project in Lucknow is gaining massive traction among investors.

As a responsible organisation, RLDA also actively participated in the battle against coronavirus with an aim to augment government efforts in this direction. We conceptualized and executed campaigns across the social media platforms to disseminate awareness and ensured the free flow of information on the significance of health and hygiene amid these unprecedented times. The situation has improved tremendously since April, and I am optimistic of steady economic growth by the end of this year. At RLDA, we are confident in delivering the projects within the stipulated time limit by working together to accomplish our goals this financial year. All of you are vital cogs in the journey of transformation of RLDA. I urge all of you to continue working with the same zeal and enthusiasm to ensure a fruitful year.

**Stay safe and get yourself vaccinated!**



# MESSAGE FROM MEMBER BD

Dear Colleagues,

I am delighted to interact with you through this edition of the Newsletter. The second wave of the pandemic had been a temporary setback on the path to recovery. However, the decline in cases and the subsequent easing of restrictions have instilled optimism. The pandemic has proved to be learning; it has taught us the significance of adhering to necessary precautions and ensuring sound health.

Despite the resurgence of the coronavirus wave we, at RLDA, ensured seamless operations. RLDA has invited bids to engage consultants for feasibility study, detailed master planning, urban designing, engineering and preparation of DPR for the integrated redevelopment of Cuttack Railway Station which is among other 12 railway stations in Odisha. RLDA invited online bids for the commercial development of a railway land parcels at Nizamabad (Telangana), Bhavnagar (Gujarat), Sawai Madhopur (Rajasthan), Amravati (Maharashtra) and Vibhuti Khand – Gomti Nagar (Lucknow). RLDA also invited bids for Boulevard Road Colony (Delhi) and Ambari (Guwahati) Railway Colonies Re-development. Request for Qualification (RFQ) for the redevelopment of Charbagh Railway Station in Lucknow and Puri Railway Station in Odisha have also been floated. Seven Multi-Functional Complexes (MFCs) with a cumulative reserve price of Rs. 26.68 Crore were also put to bid during this period.

Despite the pandemic-induced challenges, we made significant strides towards progress during this period. We are optimistic about accelerating momentum and achieving our targets as we inch closer towards normalcy.

Stay Safe!

Thanks!

R. K. Kashyap  
Member BD





## MESSAGE FROM EDITOR

Dear Friends,

We are enthused by your overwhelming response to 'RLDA Connect'. On behalf of RLDA, I thank all of you for accepting this initiative. Your appreciation will make us work harder in the direction of strengthening our engagement with all stakeholders.

Railway land development is quintessential for a country like India, which has vast unused land parcels. Developing a vacant railway land is indeed an excellent opportunity for Indian Railways. It unlocks tremendous benefits in terms of retail and commercial development, employment generation, boosting real estate to name a few. RLDA has also been entrusted with the mandate for redevelopment of 60 railway stations within a stipulated timeline. We have made significant progress on various projects, even during this lockdown. This Newsletter aims to showcase our achievements and solicit feedback from all of you.

This first edition of RLDA Connect in FY2021-22 gives a snapshot of all activities at RLDA during these three months. The 'Knowledge Centre' section of the Newsletter sheds light on the development of the world's highest railway bridge- 'Chenab Bridge' in Jammu & Kashmir. Indian Railways has played a pivotal role in augmenting the government efforts against COVID-19. Hence the 'Creative Corner' section of the Newsletter is dedicated to commemorating this achievement of the Indian Railways. RLDA has also played an instrumental role in ensuring the free flow of information via social media on the significance of adhering to COVID appropriate behaviour and ensuring wellbeing.

As we change gears towards normalcy, vaccination will be critical in winning the battle against the pandemic. Hence I urge each of you to get yourself vaccinated and continue adhering to all precautions even after vaccination.

Thanks!

**Muktesh Mittal**  
Executive Director, Finance





## CREATIVE CORNER

### Indian Railways: A warrior in the fight against coronavirus

The second wave of coronavirus has led to massive loss of human lives and brought untold hardships to people. At the same time, it has also tested the sense of togetherness, commitment to service and led to the formulation of out-of-box solutions to tackle the crisis. Indian Railways once again emerged as a formidable player to lead the battle against the coronavirus and augmented government efforts in tackling the second wave.

It is noteworthy that Indian Railways spearheaded the battle against coronavirus since it first surfaced in 2020. The 2020 lockdown brought business activities to a grinding halt, compounding hardships for the migrant workers. At this critical juncture, the Indian Railways started Shramik Special Trains and transported over 63 lakh migrant labourers to their home state through 4,621 trips between May and August 2020. It was perhaps the largest ever operation by the railways. These migrants were also served free food and water en route their journey.

Keeping COVID-19 patients safe and isolated is an essential part of the treatment. Amid the rise in cases leading to the shortage of isolation wards, Indian Railways converted train coaches into COVID care wards equipped with all necessary medical facilities. Simultaneously, some of its hospitals were turned into dedicated COVID centres for the treatment of patients.

Indian Railways also got a unique responsibility of transporting a batch of swab samples from Delhi to Indore for testing within a tight timeline. The national transporter sent these samples through a freight train manned by guards to monitor these samples till their collection at the designated laboratory. Indian Railways also increased the frequency of freight trains and parcel trains to transport essential supplies, including medicines, medical equipment and milk across the country,

The second wave of COVID-19 this year led to a shortage of oxygen and beds. Indian Railways ran dedicated 'Oxygen Express' trains to transport oxygen and save countless lives. Indian Railways is indeed a frontline corona warrior, and its initiatives are a testament to its commitment to serving as the lifeline of the country.

A salute to the entire team of Indian Railways!

Deepak Gupta  
Manager Marketing





## KNOWLEDGE CENTRE

### Chenab Bridge: The Highest Rail Bridge in the World

The scenic beauty of Jammu and Kashmir (J&K) mesmerises people across the globe, especially nature lovers. Indian Railways, with its projects that often exemplify marvellous engineering architecture, has enhanced the attractiveness of such destinations. The Indian Railways are constructing a magnificent structure- 'Chenab Bridge' over the Chenab River in Jammu & Kashmir. It has recently achieved a major milestone by completing the construction of the arch. The pictures came out in the public domain, instilling pride in the exemplary contribution of the Indian Railways.

Nestled in the lap of nature, Chenab Bridge is the world's highest railway bridge, 359 meters above the base of the Chenab River. It is 35 meters taller than the Eiffel Tower in Paris, France and five times the height of the Qutab Minar in Delhi. The overall weight of the arch is 10,619 metric tonnes, and it is constructed out of steel boxes that will be filled with concrete to improve stability. The construction involves the fabrication of 28,660 metric tonnes of steel, 10 lakh cubic meters of earthwork and 66,000 cubic meters of concrete.

As far as security is concerned, the bridge has been designed to withstand high wind speed of up to 266 kmph and earthquake waves of the highest intensity equal to the Zone-V category. The inception of a 1.3 Km-long iconic bridge took place in 2004, and this project is expected to be completed by the end of this year.

The structure is a part of the Udhampur-Srinagar-Baramulla Rail Link (USBRL) project of Indian Railways that will connect Kashmir with the rest of India through a rail network. The completion of the steel arch was considered to be the most challenging part of the project. With the attachment of the last piece of metal of 5.6 m, the team successfully executed the most arduous task in construction.

This meticulously designed engineering architecture will facilitate transportation. It will also set a benchmark in excellence and serve as a precedent for encouraging futuristic construction.









## RLDA to redevelop Cuttack rly station

Invites bids for engaging consultancy services

PNS ■ CUTTACK

The Rail Land Development Authority (RLDA) had invited bids for engaging consultancy services for feasibility study, detailed master planning, urban designing, engineering and preparation of Detailed Project Report (DPR) for integrated re-development of the Cuttack Railway Station.

The objective of engaging the consultancy services is to

attain clarity on the development potential of the station and the surrounding land parcels for phased commercial development. "Cuttack is the birth place of Netaji Subhash Chandra Bose and the second-largest city in Odisha. It is also among the largest textile hubs in east India and home to several medium and small-scale industries.

The redevelopment of the station is among the several proposed infrastructural projects in the city that will offer enhanced customer experience and augment Cuttack's tourism potential," said Vice Chairman, RLDA Ved Parkash Dudgeja. The study area spans 20 hectares. The consultant will be mandated with preparing

the technical feasibility report, concept plans and master plan for the redevelopment of the station along with a plan for monetisation of adjacent land parcels, including colony redevelopment.

The consultant will also be entrusted with the bid management process. The consultancy tender shall be awarded soon. The estimated completion period of the consultancy assignment is 6.5 months.

A total of 12 stations in Odisha have been entrusted to the RLDA by the Ministry of Railways for conducting techno-economic feasibility studies for redevelopment, including Sambalpur, Rourkela, Baleswar, Bhadrak, Brahmapur and Rayagada, etc.

## THE ECONOMIC TIMES

### Adani Rlys, GMR, 7 Others Eligible to Bid for New Delhi Rly Station Upgrade

Faizan.Haldar@timesgroup.com

New Delhi: Adani Railways Transport, the GMR Group, Arabian Construction Co, Anchorage Infrastructure and Kalpataru Power Transmission are among nine domestic and international companies that will be eligible to bid for the New Delhi railway station redevelopment project, entailing an estimated capital expenditure of ₹6,500 crore, said a Rail Land Development Authority (RLDA) official.

The RLDA that in February received requests for qualification from these firms has found all of them eligible. "We will now invite them to participate

in the tender and are likely to award the bid by the end of this year," said the official.

**The New Delhi station handles 450,000 passengers & 400 trains a day, which is expected to increase**

Omace, BIF IV India Infrastructure Holding, ISQ Asia Infrastructure Investments and Elpis Ventures are the other companies that have been cleared for the bidding process.

The RLDA has planned a mix of retail, office and hospitality developments on 30 acres near Connaught Place as part of the redevelopment project. Due to the pandemic, the authority has undertaken all the pre-bid meetings online. It has also conducted virtual road shows to attract investors and ensured that the project execution doesn't suffer due to Covid-19.

The redevelopment of the railway station is a flagship project of the RLDA and the first project to be undertaken on the Transit-Oriented Development concept in the NCR.

## BusinessLine

### RLDA invites bids for development of Railway land at Nizamabad

OUR BUREAU

Hyderabad, May 30

Rail Land Development Authority (RLDA) has invited online bids for the commercial development of a railway land parcel at Nizamabad, Telangana.

Spanning 2,204.96 square metres, the site at the Hyderabad Division of South Central Railway is surrounded by commercial and semi-commercial development. The reference built-up area of the site is 6,773.89 sq m and its reserve price is ₹3.95 crore. The land will be leased out for 45 years. The online pre-bid meeting will be held on June 3, and the deadline for the bid submission is July 26. "The planned commercial development, such as a retail space, hypermarket or a budget hotel will be the first-of-its-kind on the site, which... The site can also be put to use for a multi-specialty hospital," Ved Parkash Dudgeja, Vice-Chairman, RLDA said in a release.

## DECCAN Chronicle

### Rly offers 45-year land lease for development

DC CORRESPONDENT  
HYDERABAD, MAY 30

The Rail Land Development Authority (RLDA) said it was providing a 45-year lease for the development of a commercial real estate space that it owns in Nizamabad town. The land

parcel, next to the Nizamabad bus depot, is in the heart of the town's commercial area and could be used for developing retail space, a hypermarket, or a budget hotel, the RLDA said.

"In view of the expected government push for the health sector, the site can also be put to use for a multi-specialty hospital," according to RLDA vice-chairman Ved Parkash Dudgeja.

The 2,204.96 square metre (sq. m.) plot can have a built-up area of around 6,100 sq.m. It has a reserve price

of ₹3.95 crore. In an announcement, the RLDA said an online pre-bid meeting will be held on June 3, with a July 26 deadline for bid submission. The Indian Railways owns around 42,000 hectares of vacant land and the RLDA, as part of its activities, has leased out two railway colonies in Secunderabad for redevelopment. Also, as part of the Centre's Smart City project, the RLDA has included Tirupati and Nellore railway stations in Andhra Pradesh for redevelopment under a public-private partnership mode, it said.

Nizamabad railway station, the RLDA said, is the convergence station for Nizamabad-Peddapalli section and Jankampet-Bodhan line with Kacheguda-Manmad sections of the South Central Railway.

## Telangana Today

### RLDA invites bids for development of railway land

STATE BUREAU  
Nizamabad

The Rail Land Development Authority (RLDA) has invited online bids for commercial development of a railway land parcel in Nizamabad. Spanning across 2,204.96 square metres, the site is situated in the Hyderabad Division of

South Central Railway and is surrounded by commercial and semi-commercial development.

It is easily accessible from the railway station and Nizamabad main bus stand. The reference built-up area of the site is 6,773.89 square metres and its reserve price is ₹3.95 crore. The land will be leased out for 45

years. The online pre-bid meeting will be held on June 3 and the deadline for the bid submission is July 26. The site is located in a densely populated commercial area adjacent to Nizamabad bus depot, abutting an 18 metre wide road. Surrounded by the Nizamabad railway station, it is bounded by vacant railway land in the north and

east, a master plan road in the south and Telangana State Transportation Corporation bus stand in the west, according to a press release. "Nizamabad is a fast-developing urban agglomeration in Telangana. Located in the heart of the city, the site lies in the vicinity of Government Medical College and is well-connected

to prominent landmarks such as Khanapur Industrial Estate with an excellent road network.

The planned commercial development, such as a retail space, hypermarket or a budget hotel, will be the first-of-its-kind on the site that will boost real estate, tourism and investment potential of the region.



### Indian Railways To Develop Multi-Functional Complexes At Bellary, Sikar, Bharatpur Stations

The aim of developing multi-functional complexes at the three railway stations is to equip the land with better infrastructure and boost passenger-centric amenities.

Infrastructure | Edited by Nikita Prasad | Updated: April 27, 2021 9:23 pm IST



The Rail Land Development Authority - Indian Railways' special purpose vehicle for land monetization, recently invited bids for leasing three sites, in order to develop multi-functional complexes or MFC at Sikar, Bellary, and Bharatpur railway stations, for a period of 45 years. According to a statement shared by the organisation, the aim of developing multi-functional complexes at the three railway stations is to equip the land with better infrastructure and boost passenger-centric amenities. (Also Read: Indian Railways Adopts Form-Based Codes For Station Redevelopment Project)

### RLDA to develop multi-functional complexes at 3 railway stations in Rajasthan, Karnataka

Author : ANI | April 27, 2021 04:45 PM

The Rail Land Development Authority (RLDA) has invited bids for leasing three sites to develop Multi-Functional Complexes (MFC) at Bellary, Sikar and Bharatpur Railway Stations for 45 years.



The Rail Land Development Authority (RLDA) has invited bids for leasing three sites to develop Multi-Functional Complexes (MFC) at Bellary, Sikar and Bharatpur Railway Stations for 45 years.

A RLDA release said that the objective of the development of Multi-Functional Complexes is to equip railway stations with amenities and boost customer experience. Two of these sites are in Rajasthan and one in Karnataka.

The sites are situated in the vicinity of the respective station complexes or fall in the circulating area of the railway stations. Bidders can download bid documents at the website. The deadline for bid submission is May 12, 2021. A combination of a hotel, retail spaces and retail amenities are envisaged to be developed on these MFC sites.

"The sites are strategically located in the vicinity of railway stations and are well-connected to prominent landmarks. The proposed Multi-Functional Complexes at these three railway stations will provide state-of-the-art amenities to passengers and enhance their experience. The development will provide a fillip to tourism and retail segments and contribute towards the local economy as well. RLDA's model of development of MFCs also provides opportunities to small investors to invest in commercial spaces having assured footfall near the existing railway stations", said Ved Parkash Dudgeja, Vice Chairman, RLDA.

The release said that the bidder will be selected through a transparent online single stage bidding process. The developer will be mandated to complete construction at each site and commission the same within two years. These sites are meant to enhance rail user facilities such as shopping, bookstall, ATM, food stall, medicine, variety store, budget hotel etc. The release said the bidder will be permitted to market and sub-lease built-up Area for any legal and lawful activities.

### 9 big companies in race to get New Delhi Railway station re-development project worth Rs 6,500 crore

Reema Sharma May 26, 2021, 16:13 PM IST,



RLDA will float the Request for Proposal (RFP) for qualified bidders of the New Delhi Station redevelopment project worth Rs 6,500 crore.

New Delhi: Nine big companies of the country are in the race to get New Delhi railway station re-development project. RLDA will float the Request for Proposal (RFP) for qualified bidders of the New Delhi Station re-development project worth Rs 6,500 crore.

### Zee Biz Exclusive – BIG NDLS BREAKING - Modi government shortlists 9 companies to participate in bidding process for New Delhi Railway Station redevelopment

A big news is now emerging regarding the Indian Railways. This is with regards to the redevelopment of the New Delhi Railway station. The government is moving swiftly towards its plan for redeveloping the New Delhi Railway Station and the bidding process has already started. Zee Business' Sameer Dixit has this exclusive report



A big news is now emerging regarding the Indian Railways. This is with regards to the redevelopment of the New Delhi Railway station. The government is moving swiftly towards its plan for redeveloping the New Delhi Railway Station and the bidding process has already started. Zee Business' Sameer Dixit has this exclusive report.

Dixit tells that the big news is that 9 companies have been shortlisted to participate in the bidding process. They will now go ahead with financial bid.



## THE ECONOMIC TIMES

### Synopsis

This land parcel is located in the vicinity of the Amravati railway station in a commercial hub comprising Irwin Square to Mahatma Chowk, railway station road, and the road leading to the Dr. B. R. Ambedkar Hospital, as spokes of connectivity.



The Rail Land Development Authority (RLDA), a statutory body under the Ministry of Railways, has floated a Request for Proposal (RFP) for leasing a railway land parcel in Maharashtra's Amravati for commercial development.

The 2.5-acre land parcel has development potential of 119,350 sq ft with utilising permissible Floor Space Index (FSI) of 1.10. The reserve price for the plot to be leased out for 45 years is Rs 25 crores.

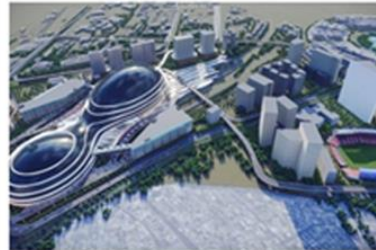
The online pre-bid meeting for this plot will be held on June 9, and the

## FINANCIAL EXPRESS

### Public-Private Partnership in Indian Railways: Key to infrastructure development

Updated: June 08, 2021 5:31 PM

Taking cognizance of its significance in overall infrastructural development, the NIP envisages the investment in Indian Railways worth Rs 11.43 lakh crore till 2024-25.



Nevertheless, the PPP model is fraught with several hurdles that must be addressed to ensure its efficacy.

By Ved Prakash Dutt

## ANI

South Asia's Leading Multimedia News Agency



Representative image

RLDA to develop multi-functional complexes at 3 railway stations in Rajasthan, Karnataka

ANI | Updated: Apr 27, 2021 14:45 IST

New Delhi [India], April 27 (ANI): The Rail Land Development Authority (RLDA) has invited bids for leasing three sites to develop Multi-Functional Complexes (MFC) at Bellary, Silar and Bhansipur Railway Stations for 45 years.

## दैनिक भास्कर

### आरएलडीए सवाई माधोपुर में चार हजार स्ववायर मीटर खाली भूखंड को लीज पर देगी

निविदा जमा करने की अंतिम तिथि 26 जुलाई

कास | सवाई माधोपुर

रेल भूमि विकास प्राधिकरण (आरएलडीए) ने सवाई माधोपुर में कमर्शियल डेवलपमेंट के लिए रेलवे की 4 हजार स्ववायर मीटर खाली जमीन को लीज पर देने के लिए ऑनलाइन रिक्वेस्ट फॉर प्रोपोजल (आरएफपी) जारी किया है। यह साइट पश्चिम मध्य रेलवे के कोटा डिवीजन में सवाई माधोपुर रेलवे स्टेशन के प्लेटफॉर्म नंबर -1 की तरफ

बने जीआरपी थाना के पास अवस्थित है। यह सड़क मार्ग के माध्यम से शहर के विभिन्न हिस्सों में अच्छी तरह से जुड़ा हुआ है। यह भूखंड 4 हजार स्ववायर मीटर में फैला है और 2.0 के बिल्ट-अप एरिया रेशियो (बीयूएआर) के साथ इस्का बिल्ट-अप एरिया (बीयूए) 8 हजार स्ववायर मीटर है। जमीन का आरक्षित मूल्य 13.50 करोड़ रुपये है और इसे 45 वर्षों के लिए लीज पर दिया जाएगा। ऑनलाइन प्री-बिड मीटिंग 8 जून 2021 को आयोजित होगी और निविदा जमा करने की अंतिम तिथि 26 जुलाई है।

## ET Government.com

Your Exclusive e-Governance Source

### Opinion: Opportunities for urban land redevelopment in India

Huge tracts of surplus land of government departments and PSUs like Railways, Ministry of Defence, BSNL, Air India, etc., in all the major cities of the country offer a great opportunity to start a chain reaction of development of urban spaces required for the future needs of the country.

ETGovernment.com | May 04, 2021, 14:04 IST



By Ved Prakash Dutt

The urban land redevelopment refers to the reorganization of the urban land from low-density residential use to high-density commercial development. It is usually accompanied by upgradation

## TOI

### Gomtinagar rly station project gains traction among investors



An artist's impression of the redeveloped railway station.

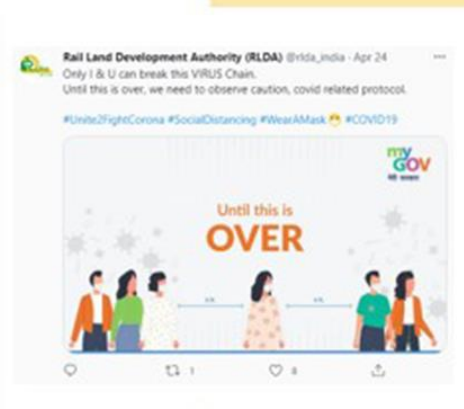
Lucknow: The redevelopment of Gomtinagar railway station in Lucknow is gaining traction among investors. About 10% of commercial space has already been booked by retail players.

Currently, out of two commercial towers - Block B1 and Block B2 as a single unit with a combined built-up area of 4,53,000 sq feet are being auctioned with some units having been already sold 15-20% above the reserve price.



# UPDATES @ RLDA

## COVID Safety/Awareness Campaign





## Leasing of Railway Land

RLDA invited bids for following land parcels during April-June,2021

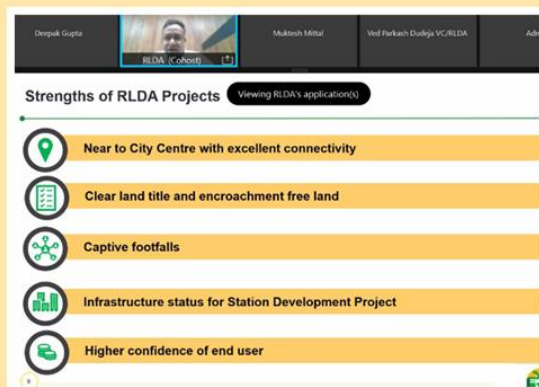
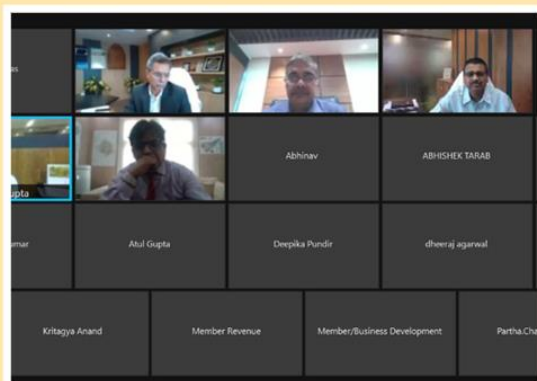
- Leasing of four land parcels i.e. Waltax Road, Ayanavaram (3 Land Parcels) cumulatively spanning approx. 9.0 acres, in Chennai for a period of 45 years.
- Commercial development of Railway Land Parcel 3017 Sqm. at Bhusawal for 45 years.
- Commercial Development on Railway Land Parcel 10080 sqm. at Amravati Railway Station for 45 years.
- Residential cum Commercial Development of Railway land 4969 Sqm. at Bhavnagar, Western Railway for 99 years.
- Commercial development on approx. 4000 sqm. of Railway land at Sawai Madhopur, Rajasthan for 45 years
- Commercial development on Railway land parcel of 2204.96 Sqm. (Approx.) at Nizamabad, Telangana State for 45 years.
- Lease of 6.86 Acre Railway Land in Vibhuti Khand, Gomti Nagar, Lucknow, for Residential Development on 99 years
- Commercial Development on Railway Land Parcel of 21.51 acre situated at Moula Ali Flyover in Secunderabad, Telangana for 99 years
- Commercial Development of two land parcels measuring 1.86 acres and 1.93 Acres of Railway Land at Shri Mata Vaishno Devi Katra Railway Station for 45 years.
- Residential cum Commercial Development on Railway Land (approx. 9,488.22 Sqm.) at Ambari, Guwahati, NFR for 99 years.
- Commercial Development of Railway Land admeasuring 8.83 Ha in Salt Golah on the Western Bank of Hooghly river in Howrah (West Bengal) for 99 years.

## Colony Re-development Projects

- Lease for 1516.00 Sqm. (Approx.) Railway land for 45 years for Commercial Development and Re-development of Railway colony in 9428.00 sqm. (approx.) Land area at Vasundhara (Old Loco ) Railway Colony, Varanasi
- Redevelopment of 2.18 Ha of Boulevard Road Railway Colony, Delhi for 99 years

## Railway Station Re-development Project

- RFQ from interested bidders for Re-development of Lucknow Railway Station, Lucknow
- RFQ from interested bidders for Re-development of Puri Railway station, Odisha



RLDA recently organised an investors meet to showcase the key 16 sites that are up for leasing to prospective bidders. The meet was chaired by Shri. Ved Parkash Dudeja, Vice Chairman, RLDA. Senior officials from RLDA were also present on the occasion.

The investors meet received an overwhelming response from the stakeholders wherein their queries were addressed.

# SOCIAL MEDIA PRESENCE

We are present on Koo, Facebook, Twitter and LinkedIn, and actively utilizing these platforms to interact and share information with our key stakeholders.



rldaindia



railanddevelopmentauthority



rlda\_india



rlda\_india



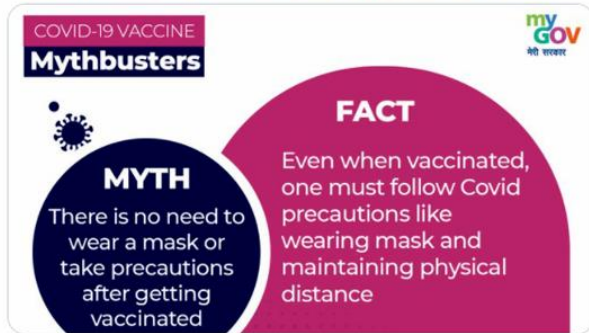
# SOCIAL MEDIA SNAPSHOTS



**Rail Land Development Authority (RLDA) @rlda\_india · May 10**

MythBuster Alert: Even after completing the course of Covid vaccine, it is mandatory to follow covid appropriate behaviour at all times to ensure safety of yourself and your loved ones.

#Unite2FightCorona #RLDA #WearAMask 🧐 #SocialDistancing



3

14



**Rail Land Development Authority (RLDA) @rlda\_india · Apr 29**

Follow COVID Appropriate Behaviour

- Wash your hands regularly with soap for at least 20 seconds
- Always Cover your nose & mouth with mask/face cover,
- Maintain social distancing

#Unite2FightCorona #SocialDistancing #RLDA #WearAMask 🧐



2

12



**Rail Land Development Authority (RLDA) @rlda\_india · Apr 22**

On this #EarthDay, let us commit ourselves to always be kind to the generous earth and to 'Restore Our Earth' to make it more liveable.

#RLDA #EarthDay2021 #RestoreOurEarth #ClimateAction #SaveEarth



3

13



**Rail Land Development Authority (RLDA) @rlda\_india · May 5**

To cater to the needs of the burgeoning population and boost up urbanisation, urban land redevelopment is inevitable that will upgrade existing infrastructure and propel economic growth.

Read the opinion of Shri Ved Prakash Dudeja, VC, RLDA.

Read more:



Opinion: Opportunities for urban land redevelopment in India - ET Gov... Huge tracts of surplus land of government departments and PSUs like Railways, Ministry of Defence, BSNL, Air India, etc., in all the major citie...  
[government.economictimes.indiatimes.com](https://government.economictimes.indiatimes.com)



3

13



**Rail Land Development Authority (RLDA) @rlda\_india · Apr 29**

RLDA has invited bids for leasing of three sites to develop Multi-Functional Complexes at Bellary, Sikar, and Bharatpur Railway Stations. A combination of hotel, retail spaces, and retail amenities are envisaged to be developed at these MFC sites.

#RLDA #MFC #Railway



2

15



**Rail Land Development Authority (RLDA) @rlda\_india · Apr 12**

COVID19 can be tackled if we collectively follow rules.

There is only one way to stay safe and that is to follow the rules and regulations.

#RLDA #Unite2FightCorona #IndiaFightsCorona #SocialDistancing #WearAMask 🧐



1

8



# SOCIAL MEDIA SNAPSHOTS



**Rail Land Development Authority (RLDA)** @rlda\_india · Jun 29

मास्क और स्वच्छता आपकी सुरक्षा के लिए अत्यंत आवश्यक है, अपनी और दूसरों की सुरक्षा के लिए इससे संबंधित आदतों को अपनाएं!

#RLDA #RailDevelopment #Unite2FightCorona #SocialDistancing #Mask #HandWash @RailMinIndia



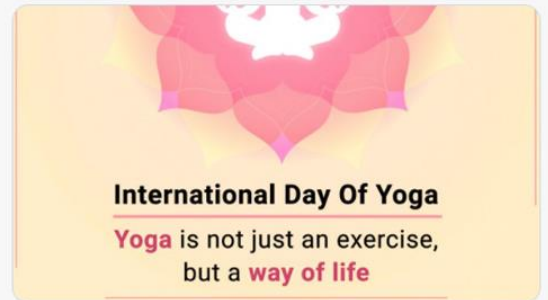
2 11



**Rail Land Development Authority (RLDA)** @rlda\_india · Jun 21

Make yourself aware of the importance of Yoga, you will find it extremely beneficial to your physical and mental health. RLDA wishes everyone a Happy International Yoga Day!

#BeWithYogaBeAtHome #YogaDay2021 #YogaForWellness #InternationalDayOfYoga #YogaDay #RLDA @moayush



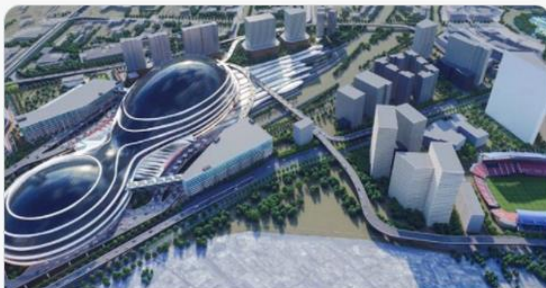
1 10



**Rail Land Development Authority (RLDA)** @rlda\_india · Jun 10

Infrastructure development projects need collaboration between various stakeholders for timely completion, and PPP has emerged as a resilient model for the same. Read an opinion piece by Shri Ved Parkash Dudeja, VC-RLDA

#RLDA @RailMinIndia  
Read more:



Public-Private Partnership in Indian Railways: Key to infrastructure deve...  
Taking cognizance of its significance in overall infrastructural development, the NIP envisages the investment in Indian Railways wor...  
financialexpress.com

3 12



**Rail Land Development Authority (RLDA)** @rlda\_india · Jun 3

RLDA has floated a Request for Qualification for the redevelopment of Lucknow's Charbagh Railway Station. The deadline for the submission of RFQ is June 24, 2021.

#RLDA #LandDevelopment #Lucknow #Charbagh #RFQ #RailwayStation @RailMinIndia  
Read more:



RLDA invites RFQ for redevelopment of Lucknow's Char Bagh railway st...  
The objective of the redevelopment is to equip it with state-of-the-art amenities like segregation of arrival and departure, air-concourse, foot...  
economictimes.indiatimes.com

3 15



## Precautions Sahi Toh Risk Nahi

Stay protected from Coronavirus with right precautions



Wear Mask



Sanitize or wash your hand frequently



**Rail Land Development Authority (RLDA)**  
@rlda\_india

Right precautions can keep you safe from #COVID19 while curbing its transmission. Do follow the precautionary guidelines to ensure safety against Covid.

Let's defeat the virus!

#RLDA #WearAMask 🧐 #SocialDistancing #Safety #Covid





## RLDA Welcomes:

- Sh. Kumar Himanshu – JGM/Project-5
- Sh. Naresh Bisht – DGM/Finance & Accounts
- Ms. Deepika Sharma – Office Assistant /Project
- Sh. Vikas Mathur – Office Assistant /Secretary
- Sh. Sanjeev Bhatia – Office Assistant / Project
- Sh. S. V. Vernekar – SEO (Project) /Jaipur
- Col. Amit Sharma – JGM/Project-4
- Sh. Alok Ranjan – Asstt. Manager/ IT
- Sh. Gyani Ram Kumawat – Chief Project Manager/Jaipur

## RLDA bid farewell to following officers:

- Sh. Rajesh Kumar – Secretary
- Sh. Rakesh Kumar Gupta – DGM/Project-4
- Sh. Debasis Dutta – Member/Planning
- Sh. Sandeep Kumar – DGM/Tender

# RLDA CONNECT E-Newsletter

Editor: Muktesh Mittal,  
Executive Director, Finance

Sub-Editor: Deepak Gupta,  
Manager - Marketing

Please address your correspondence to

**The Editor**  
RLDA Connect  
[mgrmarketingrldapradvt@gmail.com](mailto:mgrmarketingrldapradvt@gmail.com)