

DEVELOPMENT OF COMMERCIAL LAND PARCELS

- **Recognizing the potential of surplus Railway land and adopting a systematic approach to its development.**
- **Transforming underutilized Railway land into dynamic commercial ventures that contribute to economic growth.**
- **Generating revenue, supporting infrastructure development and contributing to economic progress.**
- **On-boarding of Developer for Railway land development through transparent bidding process.**
- **Expanding horizon in to self development projects.**

PROGRESS IN GT ROAD, AMRITSAR



Proposed View

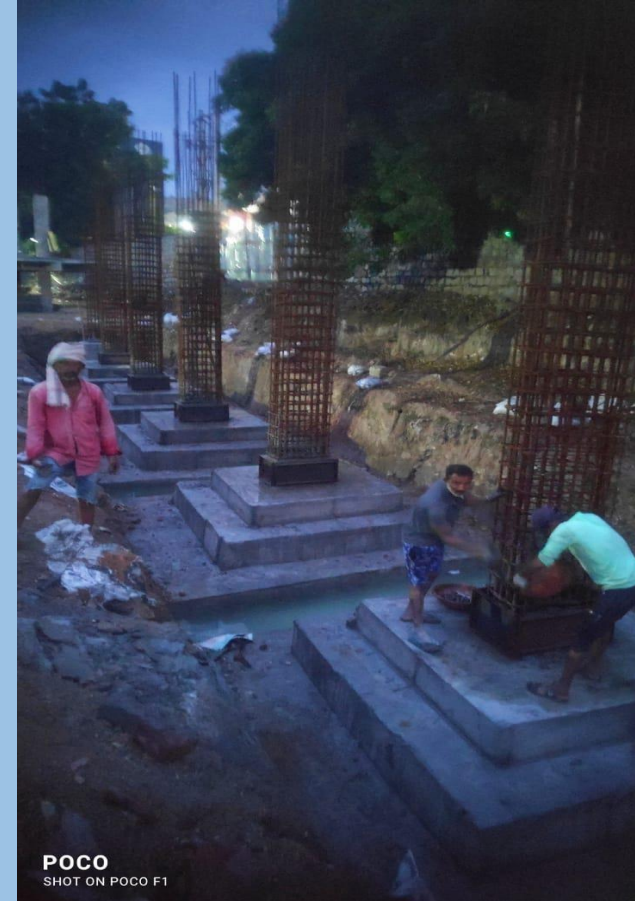


Current status

GUNTAKAL, SPORTS PAVILLION



Proposed View



Current Status

ASANSOL

Current View of the project



Current View of Jhansi, East



Current View of Abu Road



PADI, CHENNAI



Proposed View



Current status of the project

Commercial Development at ASHOK VIHAR



Commercial Development at BIJWASAN

