



# RLDA CONNECT E-NEWSLETTER

PROPOSED VIEW OF BIJWASAN RAILWAY STATION



RAIL LAND DEVELOPMENT AUTHORITY

A Statutory Authority Under Ministry Of  
Railways, Government Of India

RLDA | Q4 - OCT - DEC, 2024

# MESSAGE FROM VICE -CHAIRMAN

Dear Friends,

Warm greetings, and welcome to the fourth-quarter edition of the RLDA Connect Newsletter for 2024! This year has been dynamic for RLDA, as we delved into broader areas apart from established verticals viz MFCs development, land parcel development & Colony redevelopment efforts on self-development of Land assets, integrated master planning of railway Land and utilizing built-up and our airspaces at redeveloped stations. These steps mark our confidence gained from competencies developed in our journey.

As an integral arm of Indian Railways—the lifeline of the nation—RLDA is proud to have come up with its vision 2047. In 2024, Indian Railways has continued its journey of modernization and innovation, paving the way for sustainable development and economic growth.



In this year, RLDA awarded various land parcels like Belanganj, Agra, and Rana Pratap Nagar, Udaipur. The Colonies under redevelopment are also progressing well & the works of Colonies at Ajni, Ludhiana, Secunderabad and Muzaffarpur have nicely picked up.

Our station redevelopment projects have also made substantial progress, despite the complexities of brownfield construction. These initiatives are not only upgrading the infrastructure but are also fostering urban growth, generating employment, and enhancing the ease of travel for millions of passengers. Modernization, sustainability, and Passenger amenities remain at the core of these projects, aligning with Indian Railways' green and forward-looking vision.

As we prepare to step into 2025, RLDA remains committed to maximizing the value of railway assets and contributing to India's infrastructure renaissance. Together, we will continue to build a sustainable and dynamic future for Indian Railways and the nation.

Best regards,

Manoj Garg

Vice Chairman, RLDA



# MESSAGE FROM MEMBER PLANNING

Dear Colleagues,

As RLDA progresses with its ambitious station redevelopment and land-use optimization projects, it is imperative to address the challenges that arise during the critical planning and execution phases. These projects, poised to transform the landscape of Indian Railways, demand meticulous attention towards operational efficiency, safety, and passenger convenience.

One of our foremost priorities is block planning, where ensuring minimal inconvenience to passengers is non-negotiable. Our execution strategy must align seamlessly with the operational and safety requirements of Indian Railways. This requires a cohesive approach, where station modernization is balanced with uninterrupted service.

**PRE-REDEVELOPMENT STATION BUILDING AT  
AHMEDABAD BEFORE DISMANTLING**



**COMPACTION ROLLER 5MT FOR  
COMPACTION OF SOIL AND  
BOBCAT FOR BACKFILLING OF SOIL**

Traffic diversion is another crucial aspect of our redevelopment work. Effective coordination with local authorities is essential to design alternative routes, supported by timely approval from the police. Intensive public awareness campaigns, including advertisements and signage, should ensure that passengers and local residents are well-informed in advance, thereby minimizing disruptions.

Additionally, the availability of machinery and equipment must be ensured to maintain the pace of development without delays. Robust planning and inventory management will enable us to address this challenge effectively.

Lastly, the coordination between RLDA and Indian Railways is pivotal. Collaboration at every level—technical, operational, and administrative—ensures that projects remain on track and deliver long-term value to stakeholders. Close interaction with railway officials will help mitigate potential bottlenecks while enabling the seamless integration of redevelopment initiatives.

Our goal remains to create vibrant, passenger-friendly hubs that redefine the urban rail experience and contribute to India's infrastructure development. I urge all teams to work with a problem-solving mindset and maintain the highest standards of excellence in execution. Together, let us make these transformative projects a resounding success.

Warm regards,

Tarun Kumar Goyal

Member Planning, RLDA

# FROM THE EDITOR'S DESK

Welcome to the 18th edition of RLDA Connect! This platform continues to reflect RLDA's vision, achievements, and aspirations, and we are thrilled to share this journey with you. The positive response to our previous editions has fueled our enthusiasm, and we are excited to reconnect with our readers as we highlight the strides RLDA is making in transforming railway infrastructure across the nation.

In this issue, we shine a spotlight on the remarkable engineering feats achieved during the dismantling and redevelopment of key infrastructure projects. Our 'Knowledge Centre' feature explores the innovative use of Building Information Modeling (BIM) in redeveloping the iconic Chhatrapati Shivaji Maharaj Terminus (CSMT), setting a benchmark for modernization and efficiency. Additionally, our 'Creative Corner' delves into the redevelopment of the Chandigarh Railway Station, a flagship project exemplifying RLDA's commitment to innovation and sustainability.



As we move forward, we remain dedicated to fostering dialogue and engagement through platforms like X (formerly Twitter), Facebook, LinkedIn, Instagram, and YouTube. I extend my heartfelt appreciation to the RLDA team for their tireless efforts and commendable achievements, which form the cornerstone of our success.

Thank you for being a part of this transformative journey. Together, let us continue to shape the future of railway infrastructure development.

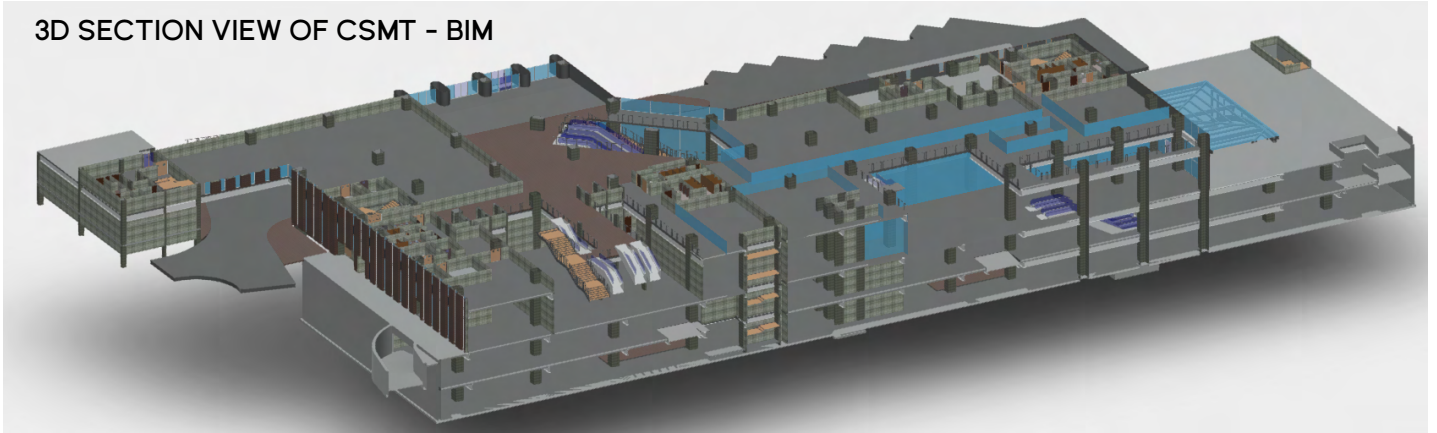
Warm regards,  
Apurva Agnihotri  
General Manager/Security & IT



## BUILDING INFORMATION MODELING (BIM) AS KEY USED IN REDEVELOPMENT OF CSMT STATION

The Chhatrapati Shivaji Maharaj Terminus (CSMT) in Mumbai stands as a symbol of India's rich architectural heritage and serves as a vital hub on the Central Railway Network which handles a huge passenger traffic daily. To meet the current & future expected Railway transport demands and to enhance the passenger experience, a major redevelopment of CSMT is underway. In this regard, the State-of-Art tool of Building Information Modeling (BIM) is being actively used in this transformative initiative.

3D SECTION VIEW OF CSMT - BIM



**What is Building Information Modeling (BIM)?** BIM is a holistic process that involves creating and managing and using digital information for a built asset during different stages of its life cycle. Enabled by intelligent BIM models, it integrates multi-disciplinary data to produce a digital representation of an asset. This allows stakeholders to visualize, design, construct, and operate more efficiently while fostering collaboration and informed decision-making.

BIM's utilities are being used to handle complete tasks in the redevelopment work of CSMT aims at preserving its UNESCO World Heritage status while modernizing its facilities. There are many sub tasks in this project like constructing new station building, refurbishing existing railway offices, conserving heritage structures, and developing surrounding areas with enhanced landscaping. BIM is being used to achieve these objectives through several impactful features.

It is important to mention that the project BIM facilitates the creation of detailed 3D models, enabling stakeholders to visualize the project comprehensively. These models ensure alignment between functional requirements and the preservation of the station's historic architecture, fostering seamless communication among architects, engineers, and planners.

†

Clash Detection is key feature where potential conflicts between structural, mechanical, electrical, and plumbing systems get identified during the design phase. Addressing these clashes early minimizes risks, reduces costs, & prevents construction delays. Many such advanced features of BIM are at use.

The project team takes use of utility of Construction Planning and Scheduling of time-related data, thus facilitating effective construction sequencing. This is crucial for an operational station like CSMT, where construction must be planned meticulously to minimize disruptions for passengers and railway operations.

Advanced feature of BIM include support for facility management and sustainability. The digital model acts as a valuable resource for maintenance, operations, and future upgrades, ensuring long-term efficiency and environmental sustainability monitoring.

## CHANDIGARH RAILWAY STATION: STATE-OF-ART TECHNOLOGY ENABLED REDEVELOPMENT

Chandigarh, known for its modern architecture and urban planning, is undergoing a major transformation with the redevelopment of its railway station into a world-class facility. The redevelopment aims to enhance passenger experience, improve operational efficiency and integrate multimodal transport systems while preserving the city's architectural ethos. The new station buildings on both Chandigarh and Panchkula sides feature Ground plus three floors (G+3) structures (60mx42m) aligned with Chandigarh's architectural style.

Designed to accommodate a peak daily traffic of 1,07,216 passengers, the project features state-of-the-art facilities to enhance passenger convenience. The redevelopment spans the Chandigarh and Panchkula sides of the station, each with a Ground + 3 structure comprising of 8,367 sqm built up area. Key highlights include waiting areas with seating for 1,050 passengers, a spacious 72-meter-wide concourse with a 182-meter roof cover, and a dedicated food and retail space of 3,967 sqm.



Parking facilities have also been meticulously planned, with the total area increasing from 13,720 sqm to 24,515 sqm. Dedicated zones for cars, two-wheelers, three-wheelers, buses and staff parking are being developed to optimize space utilization and improve traffic flow on both sides of the station.

The Panchkula-side station building is almost 95% complete, while the Chandigarh-side structure has achieved 93% completion. Platform refurbishment is underway, and external development has reached 93% completion on the Panchkula side and 57% on the Chandigarh side.

This project, once commissioned shall stand a testament to RLDA's commitment to modernizing railway infrastructure while prioritizing passenger comfort and urban sustainability. Chandigarh Railway Station is poised to become a vibrant hub that redefines the travel experience for millions.



# DETAILS OF LOA ISSUED IN LAST QUARTER

S.No	Name of Site	Amount
1	Commercial Development of Railway Land at Rana Pratap Nagar Station, Udaipur, Rajasthan	Rs. 9.44 Crores
2	Residential Development on Railway land at Belanganj, Agra (U.P)	Rs. 352.30 Crores





# RLDA WELCOMES DURING THE QUARTER

---

1. Sh. Gaurav – CPM/Delhi-4
2. Sh. Deepak Narang – Manager/Bridge/Delhi
3. Sh. Souvik Sadhukhan – AM/Tender/Delhi
4. Sh. Amandeep – AM/Electrical/Delhi
5. Sh. Himanshu Dawar – AM/Civil/Bijwasan
6. Sh. Pawan Pandey – AM/Electrical/Gurgaon
7. Sh. Mudassir Hasan – AM/Civil/Mumbai-2
8. Sh. Arka Das – AM/Civil/Delhi
9. Sh. Vishnu N.A – AM/Civil/SBC
10. Sh. Ravi Kumar Ranjan – AM/Civil/Lucknow
11. Sh. Jagdish Sharma – AM/Electrical/Delhi
12. Sh. Devendra Kumar Chaubey – AM/Electrical/Delhi

# RLDA BIDS FAREWELL DURING THE QUARTER

---

1. Sh. BRM Reddy – CPM/SBC
2. Sh. Abhijeet Sengupta – AM/F & A



**Inspection of Chandigarh Railway Station by Hon'ble Shri Ravneet Singh, Minister of State (MoS) for Railways and Food Processing Industries**



**Inspection of Lucknow Railway Station by Chairman, Railway Board along with Vice-Chairman/RLDA**

**Inspection of Nagpur Railway Station by Vice-Chairman/RLDA**





# TENDER UPDATE

## **RLDA/2024/RFP/CAS/37 Dt. 01.08.2024**

Grant of Lease hold rights of Vertical Air-Space for a period of 60 years for commercial development above newly developed South Building of Tirupati Railway Station



## **RLDA/2024/RFP/CD-43 Dated 23.09.2024**

Grant of Lease for Commercial Development on approx. 1898.24 Sqm. of Railway Land at Rana Pratap Nagar Station, Udaipur, Rajasthan for 60 years lease period

## **RLDA/2024/RFP/CD-48 Dated 23.09.2024**

Grant of Lease for Mixed use Development (Residential and Commercial) of approx. 19,588.47 Sqm of Railway land situated opposite to Police Lines, near Udaipur Railway, Udaipur (Rajasthan) for 99 years

## **RLDA/2024/RFP/CD-51 dated 24.09.2024**

Grant of lease of office space admeasuring 8,871 Sqm. as office space at Safdarjung Railway Station, Delhi for 60 years

## **RLDA/2024/RFP/CD-CRD/52 Dated 03.10.2024**

Grant of Lease for Railway Land for 99 years for Development including Redevelopment of existing Railway Colony (96 Units Type-II quarters) at Drivertola Railway Colony, Katihar

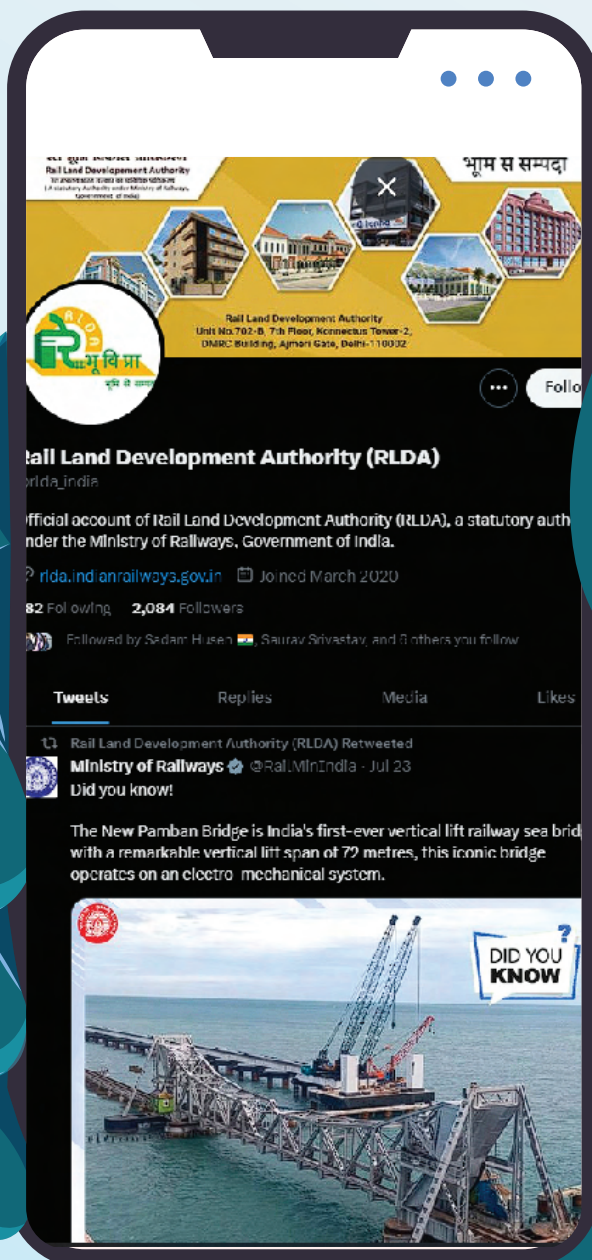
## **RLDA/2024/RFP/CD-SRD/53/ Dated 08.10.2024**

Grant of Lease of Commercial spaces at Gomti Nagar Railway Station premises, Gomti Nagar, Luc-know (UP) through e-auction for 60 years lease period



# SOCIAL MEDIA SNAPSHOT

We are present on Facebook, LinkedIn, Twitter and Instagram, and are actively utilizing these platforms to interact and share information with our stakeholders



# SOCIAL MEDIA SNAPSHOT





# SOCIAL MEDIA SNAPSHOT



Rail Land Development Authority

26 November 2024 · 🌐

राष्ट्रीय संविधान दिवस की हार्दिक शुभकामनाएँ! 🇮🇳

इस पावन अवसर पर आइए हम सब मिलकर अपने संविधान के मूल्यों की रक्षा और पालन करने का संकल्प लें। आइए हम सब मिलकर राष्ट्रहित में संविधान के आदर्शों का पालन करें।

#संविधानदिवस #NationalConstitutionDay #RDA





Rail Land Development Authority

31 December 2024 · 🌐

Expression of Interest for Lease Hold Rights in 8th Floors of Vertical Air Space at Thane Station Premises.

The required documents must be signed and stamped on all pages and submitted to the following email: [eoi.tower.thane.satis.east@gmail.com](mailto:eoi.tower.thane.satis.east@gmail.com)

Pls find link at RLDA Website  
[https://rlda.indianrailways.gov.in/uploads/EOI\(7\).pdf](https://rlda.indianrailways.gov.in/uploads/EOI(7).pdf)

For further enquiries contact:  
Assistant Manager/RLDA  
M: 9021090229

#RLDA #Lease #Thane #railway





Rail Land Development Authority

2 October 2024 · 🌐

Prime Real Estate Investment Opportunity in Punjabi Bagh.

Grant of Lease for Residential Development of 4.63 ha Railway Land Parcel 'B' near Punjabi Bagh (West), Delhi for 99 years.

The details of the tender are available on: <https://lnkd.in/g-a6ZH8K>; <https://lnkd.in/gS2Bpghu>

#RLDA #Railway #Land #LandParcels #RealEstate #Leasing #PunjabiBagh





## Business Standard

### New Delhi station revamp tender reissued

DHRUVAKSH SAHA  
New Delhi, 14 October

After over a decade of delays, the Ministry of Railways has once again attempted to kickstart the redevelopment of the New Delhi Railway Station, according to the national transporter's station development body, the Rail Land Development Authority (RLDA).

The latest tender will see the project executed at ₹2,469 crore, following the ministry's decision to scale back the initial tender and reduce the project's scope.

"This comprehensive development plan envisions the station as an integrated transportation hub that seamlessly connects rail, Metro, bus, and other modes of transport, ensuring convenient and hassle-free connectivity for passengers," RLDA statement read.

According to the request for proposal document, a pre-bid conference will take place on Tuesday in New Delhi, followed by a site visit.



The latest tender will see the project executed at ₹2,469 crore FILE PHOTO

An official familiar with the developments noted that the latest tender addresses all cost-related concerns within the industry, adding that the document has been refined through multiple consultations over the year. Earlier this year,

the ministry planned to float the tender in July, the official said.

The main components of the project include the construction of two linear station buildings on the Paharganj and Ajmeri Gate sides, an air concourse featuring arrival and departure plazas, a waiting area, vertical circulation elements such as

lifts and escalators, retail areas, and other services to facilitate passengers. While the project was initially conceptualised as a public-private partnership, a sudden reversal in September 2022 resulted in fresh approval from the Union Cabinet, converting the project into engineering, procurement, and construction mode.

Subsequently, the tender was scrapped when the two bids submitted by Larsen & Toubro and Shapoorji Pallonji were nearly ₹9,000 crore, against an estimated cost of ₹4,700 crore approved by the Cabinet.

"An elevated and ground-level road network will provide seamless connectivity to the station and help decongest the roads. Platform works, a parcel area, and two parcel tunnels will facilitate the smooth handling of parcels, along with parking and circulation facilities" RLDA added.

## Hindustan Times

### With no takers, New Delhi Rly Station's revamp cost revised

Snehl Sinha

snehl.sinha@hindustantimes.com

**NEW DELHI:** The Railway Land Development Authority (RLDA) has revised its plans to redevelop the New Delhi Railway Station (NDLS), officials aware of the development said on Monday, adding that the body has now invited fresh bids for the project.

RLDA officials said the redevelopment of the station has been in the pipeline since 2021, but it found no takers due to the high costs involved — the initial estimate for the revamp was ₹5,000 crore. The plan has now been revised to make it more "financially viable", with the redevelopment of the station premises and associated infrastructure to cost an approximate ₹2,469 crore. The bid document states that the Master Plan for the redevelopment of this entire area has already been approved by various stakeholders. HT has seen a copy of the document.

"The objective of the project is to elevate the station into a world-class transportation hub, providing state-of-the-art facilities and amenities. This comprehensive development plan envisions the station as an integrated transportation hub

#### Revamp in the works since 2021

Officials said the redevelopment plan has been revised to make the project more financially viable



#### Expected upgrades include

- Integrated multi-modal transit hub with dedicated access roads
- Hospitality, recreation and retail facilities
- Residential housing for Rly operational staff
- Two linear station buildings at Paharganj, Ajmeri Gate
- Air-concourse with arrival and departure plazas
- Waiting area, vertical circulation elements (lifts, escalators)
- Upgrades to platforms
- Development of seven flyovers linking to station
- Parking and circulation facilities

seamlessly connecting rail, metro, bus and other modes of transport, ensuring convenient and hassle-free connectivity for passengers," an RLDA spokesperson said.

NDLS is the Capital's main railway station, with 16 platforms — platform number 1 is near Paharganj, while platform

16 opens up towards Ajmeri Gate. It is also one of the busiest railway stations in India in terms of passenger trains handled (400 daily) and passenger movement (a daily footfall of around 400,000).

RLDA officials said the station has been planned as an integrated multimodal transit

an air concourse with arrival and departure plazas, vertical circulation elements such as elevators and escalators, a retail area, and office spaces.

The transportation plan includes a network of elevated and on-ground roads to provide seamless connectivity to the station and to decongest the surrounding. "There were seven flyovers planned across the New Delhi area for connectivity to the station from different parts of the city and to ensure less congestion after the footfall to the station increases. That plan is being revised but the plan to have a network of elevated roads stays, albeit with some changes," an official said, declining to be named. Officials said the project has been divided in two phases.

"The project is a brownfield work and will be executed even as the station remains operational. This will require the execution of the work to take place in phases. The first phase will comprise mainly of the development of the railway station's operational areas and related facilities and infrastructure and air space, whereas the second phase will be mainly commercial development of surrounding land area," the official said.

## जागरण

### रेलवे स्टेशन परिसर में खुलेंगे निजी और सरकारी कंपनियों के कार्यालय

संतोष कुमार सिंह • जागरण

नई दिल्ली : रिंग रेल पर स्थित सफदरजंग रेलवे स्टेशन से पैलेस आन वील्स, महाराजा एक्सप्रेस सहित कई पर्यटन विशेष ट्रेनों का परिचालन होता है। इससे यहां कई विदेशी पर्यटक भी पहुंचते हैं। अब इस स्टेशन परिसर में सरकारी व निजी कंपनियों के कार्यालय भी खुलेंगे। इसकी प्रक्रिया शुरू हो गई है। रेल भूमि विकास प्राधिकरण (आरएलडीए) ने इस स्टेशन के परिचालन भवन में कार्यालय खोलने के लिए निविदा आमंत्रित की है।

नई दिल्ली सहित अन्य रेलवे स्टेशनों के पुनर्विकास की प्रक्रिया चल रही है। स्टेशनों पर यात्रियों को अत्याधुनिक सुविधाएं उपलब्ध कराने के साथ ही व्यवसायिक गतिविधियों को बढ़ावा दिया जाएगा। इससे रेलवे की आमदनी बढ़ेगी। स्टेशनों पर कार्यालय खोलने के लिए कंपनियों को भूमि उपलब्ध कराई जाएगी। सफदरजंग रेलवे स्टेशन से इसकी शुरुआत हो रही है। कार्यालय खोलने के लिए, परिचालन भवन में 8,871 वर्ग मीटर भूमि 60 वर्षों के लिए लीज पर दी जाएगी। निविदा में पहली मंजिल पर 4,297 वर्ग मीटर के लिए 153.10 करोड़ और दूसरी

- 8,871 वर्ग मीटर स्थान 60 वर्षों के लिए लीज पर दी जाएगी
- लगभग 400 करोड़ रुपये की लागत से हो रहा पुनर्विकास

मंजिल पर 4,574 वर्ग मीटर के लिए 162.97 करोड़ आधार मूल्य रखा गया है। आरएलडीए अधिकारियों का कहना है कि कार्यालय खोलने के यह आदर्श स्थान होगा। स्टेशन के नजदीक लीला पैलेस सहित कई बड़े होटल स्थित हैं। पास में ही कोशल भवन में कोशल विकास मंत्री का कार्यालय है। कुछ दूरी पर चाणक्यपुरी में कई देशों के दूतावास व अन्य महत्वपूर्ण स्थान हैं। कार्यालय से सीधे प्लेटफार्म पर पहुंचकर लोकल ट्रेन से अपने गंतव्य तक जा सकेंगे। इस स्टेशन से होकर लोकल व लंबी दूरी की कई ट्रेनें गुजरती हैं, परंतु इसकी पहचान पर्यटन ट्रेनों के परिचालन से है। भारतीय रेलवे खानपान एवं पर्यटन निगम (आइआरसीटीसी) द्वारा यहां से पर्यटन ट्रेनें चलाई जाती हैं। इसे ध्यान में रखकर लगभग चार सौ करोड़ रुपये खर्च कर इसका पुनर्विकास किया जा रहा है। लगभग 41 हजार वर्ग मीटर क्षेत्र में निर्माण किया जा रहा है।



## THE TIMES OF INDIA

### Another shot at revamp of NDLS: RLDA invites bids for fifth time

TIMES NEWS NETWORK

**New Delhi:** The Rail Land Development Authority (RLDA) has invited bids for redevelopment of the New Delhi railway station at an estimated cost of Rs 2,469 crore. This is the fifth time that tenders have been floated for the revamp project that will be fully funded by govt.

"This comprehensive development plan envisions the station as an integrated transportation hub that seamlessly connects rail, metro, bus, and other modes of transport, ensuring convenient and hassle-free connectivity for passengers," a statement from the RLDA said.

Sources said learning from past experiences, now the plan is to make the project implementation simpler, and another tender will be floated for real estate development after the station revamp is completed. The main components of the project include construction of two linear station buildings on Paharganj and Ajmeri gate sides, an air-concourse having arrival and departure plazas,

**Sources said learning from past experiences, now the plan is to make project implementation simpler, and another tender will be floated for real estate development after the station revamp is completed**

a waiting area, vertical circulation elements such as lifts and escalators and a retail area, as per RLDA.

Elevated and on-ground road network to provide seamless connectivity, platform works, parcel area and two parcel tunnels for smooth handling of parcel, and parking facilities are also planned, it said. "The revamped New Delhi railway station will showcase a modern and sophisticated design enriched with state-of-the-art technology. It keeps in mind sustainability measures like green building standards, solar energy, and

security with CCTV cameras and access control system throughout the station," the statement said.

After unsuccessful attempts since 2001-02, the railways planned to take it up on public-private partnership (PPP) mode and some private players had shown interest. However, in Sept 2022 the cabinet decided to redevelop the station on engineering, procurement, and construction (EPC) mode or to be fully funded by govt.

The cabinet had sanctioned Rs 10,000 crore for the redevelopment of the New Delhi station, Ahmedabad station, and CSMT in Mumbai. However, after floating a tender for the station, railways had to cancel it in May 2023 as bidders quoted a higher price than estimated cost.

The redevelopment of New Delhi station is critical for the railways as it handles about 400 trains per day with more than 4.5 lakh footfall daily. The railways had got all due permissions from the land-owning agency, civic authorities, and Delhi govt which had so far been major hurdles for the redevelopment project.

## नवभारत

क्रायाकल्प रिडेवलपमेंट प्रोजेक्ट, पूर्व में बहुमंजिला इमारत, पश्चिम में अंडर ग्राउंड पार्किंग

### नये रूप में ढलने लगा नागपुर स्टेशन



#### निर्माण कार्य की प्रगति

■ **पूर्व की ओर :** बेहतर पार्किंग स्थान की सुविधा के लिए चल रहे बेसमेंट निर्माण सहित महत्वपूर्ण प्रगति.

■ **पश्चिम की ओर :** बेसमेंट का निर्माण लगातार प्रगति पर है जो बेहतर बुनियादी ढांचे को मजबूती देगा. यात्रियों की असुविधा को कम करने के लिए आरएलडीए द्वारा बेसमेंट पार्किंग का काम 2 चरणों में किया जा रहा है. प्रथम चरण के सफल समापन के बाद दूसरे चरण का काम पूरे जोरों पर चल रहा है. द्वितीय चरण के हिस्से के रूप में स्मारकीय राष्ट्रीय ध्वज 'तिरंगा' को वर्तमान स्थान से नये नये स्थान पर स्थानांतरित करने की योजना है.

#### ओपन वेंटिंग हॉल में शुरू होगा आरक्षण केंद्र

वहीं स्टेशन के पश्चिमी हिस्से की मौजूदा यात्री आरक्षण प्रणाली (पीआरएस) को भी प्लेटफॉर्म नंबर 1 के मुंबई छोर पर बने ओपन वेंटिंग हॉल में स्थानांतरित करने की योजना है. इसके लिए तैयारियां तेजी से जारी हैं.

#### यात्रियों की असुविधा कम करने का प्रयास

आरएलडीए के संबंधित अधिकारियों ने बताया कि स्टेशन के पुनर्विकास कार्यो दौरान यात्रियों को कम से कम असुविधा को प्राथमिकता दी जा रही है. उन्नत बुनियादी ढांचे में स्टेशन के विरासत आकर्षण को बरकरार रखते हुए बेहतर पार्किंग, उन्नत सुविधाएं और आधुनिक सुविधाएं शामिल होंगी. निर्बाध ट्रेन परिचालन और यात्रियों को न्यूनतम व्यवधान सुनिश्चित करने के लिए बाइनरीलैंड परियोजना को चरणों में कार्यान्वित किया जा रहा है.

#### देश के 15 स्टेशनों में नागपुर भी शामिल

उल्लेखनीय है कि आरएलडीए द्वारा पूरे भारत में 15 रेलवे स्टेशनों का पुनर्विकास कार्य किया जा रहा है. इसमें नई दिल्ली रेलवे स्टेशन और

■ **नागपुर,** नगर प्रतिनिधि. रेल भूमि विकास अधिकरण (आरएलडीए) द्वारा 487.77 करोड़ की तिथि से किया जा रहा नागपुर स्टेशन रिडेवलपमेंट प्रोजेक्ट अपनी पूरी रफ्तार पकड़ चुका है. स्टेशन के वी भाग में प्लेटफॉर्म 8 से लगी बहुमंजिला इमारत ज़रूर आने लगी है. वहीं पश्चिमी भाग में अंडर ग्राउंड किंग का एक हिस्सा पूरा करने के बाद दूसरे हिस्से सीमेंट के पिलर बनाना शुरू हो चुका है. खास बात कि इस पूरी परियोजना में स्टेशन की ऐतिहासिक मारत में किसी प्रकार का बदलाव किए बिना ही इसे





## PROPOSED VIEW OF GURGAON RAILWAY STATION



**रेल भूमि विकास प्राधिकरण**  
**RAIL LAND DEVELOPMENT AUTHORITY**  
रेल मंत्रालय भारत सरकार का संविधिक प्राधिकरण  
A statutory Authority under Ministry of Railways, Government of India

Editor: Apurva Agnihotri  
General Manager/ Security & IT  
Sub-Editor: Rahul Verma  
JGM / Marketing

Please address your correspondence to  
The Editor  
RLDA Connect  
[jgmmarketingrlda@gmail.com](mailto:jgmmarketingrlda@gmail.com)